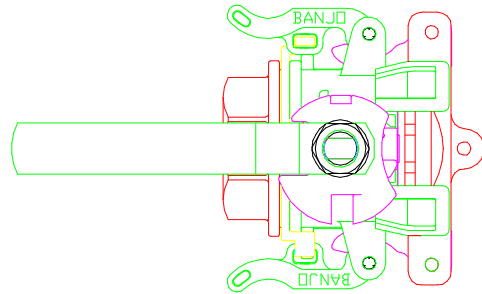
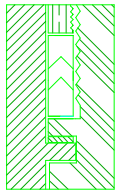


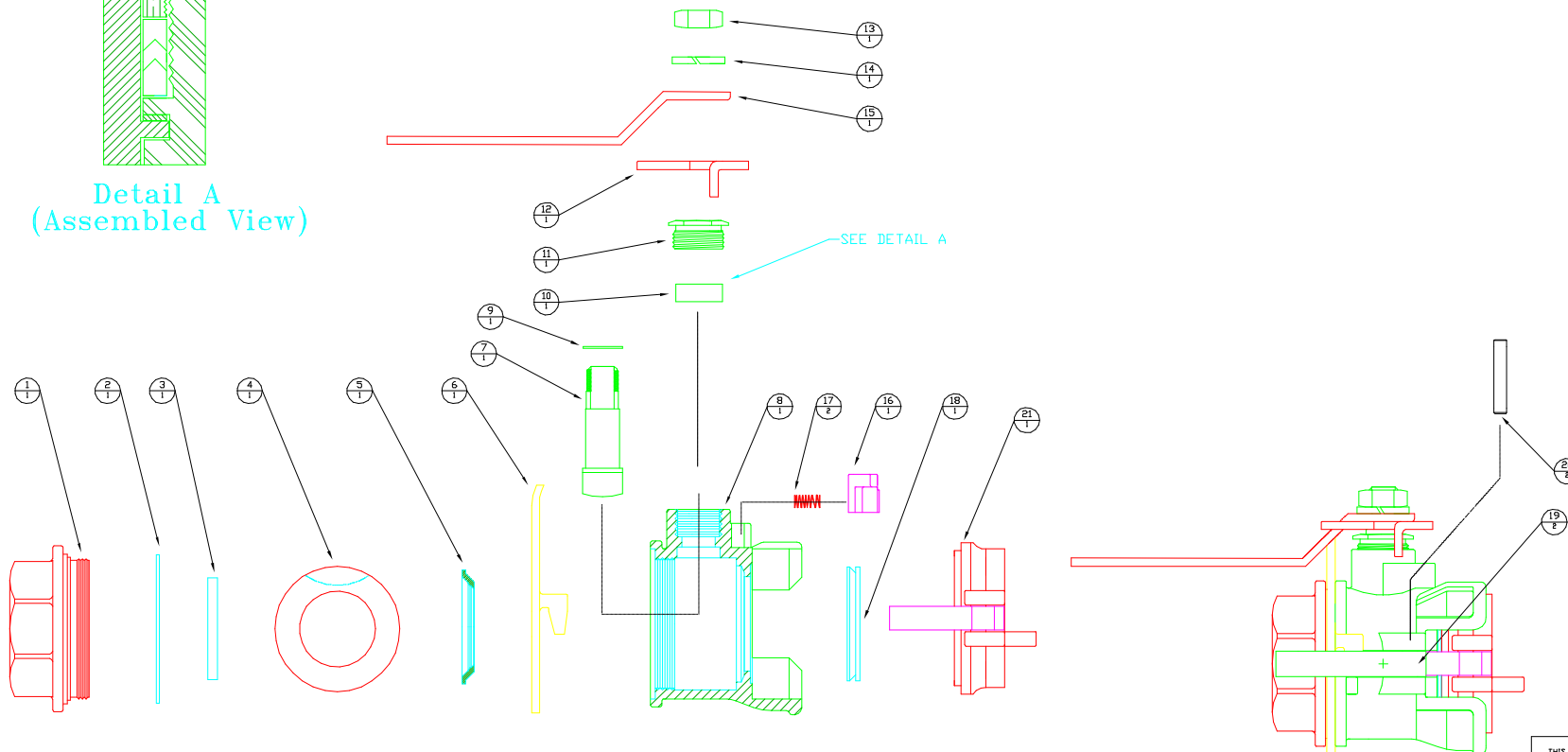
VIEW SHOWN WITH HANDLE IN OPEN POSITION



OCT 27, 1998



Detail A
(Assembled View)



| Item Qty. | Part Number | Description |
|-----------|-------------|-------------------|
| 1 1 | DM15256FSS | 2" NPTF END PLATE |
| 2 1 | DM15204SS | BODY GASKET |
| 3 1 | V20258 | SEAT |
| 4 1 | DM15255FSS | BALL |
| 5 1 | DB20258 | SEAT |
| 6 1 | DM15289SS | LOCKING YOKE |
| 7 1 | DM15151SS | STEM |
| 8 1 | DM15154FSS | VALVE BODY |
| 9 2 | VSS15060 | THRUST BEARING |
| 10 1 | VSS15160 | STEM PACKING |
| 11 1 | VSS15159 | PACKING NUT |
| 12 1 | DM15154SS | INTERLOCK CAM |
| 13 1 | VSS15020 | 5/8"-18 JAM NUT |
| 14 1 | VSS15021 | LOCKWASHER |
| 15 1 | DM15153SS | HANDLE |
| 16 1 | DM15288FSS | BUTTON |
| 17 2 | DB20281 | SPRING |
| 18 1 | DM20294A | FKM SEAL |
| 19 2 | DM200K | CAM ARM |
| 20 2 | DB200PSS | PIN |
| 21 1 | DM200APL | PLUG |
| N/S 1 | V20207 | LANYARD |

BANJO
LIQUID HANDLING PRODUCTS

BANJO CORPORATION
150 BANJO DR. ■ CRAWFORDSVILLE, IN 47933

PART NO. **DM200DSS**

TITLE **2" DRY MATE SS**

THIS DRAWING AND ALL INFORMATION CONTAINED THEREIN ARE THE EXCLUSIVE PROPERTY OF BANJO CORPORATION. UNLESS SPECIFICALLY NOTED, THIS DRAWING AND ITEMS SHOWN IN THIS DRAWING ARE SUBJECT TO CHANGE AT ANY TIME.