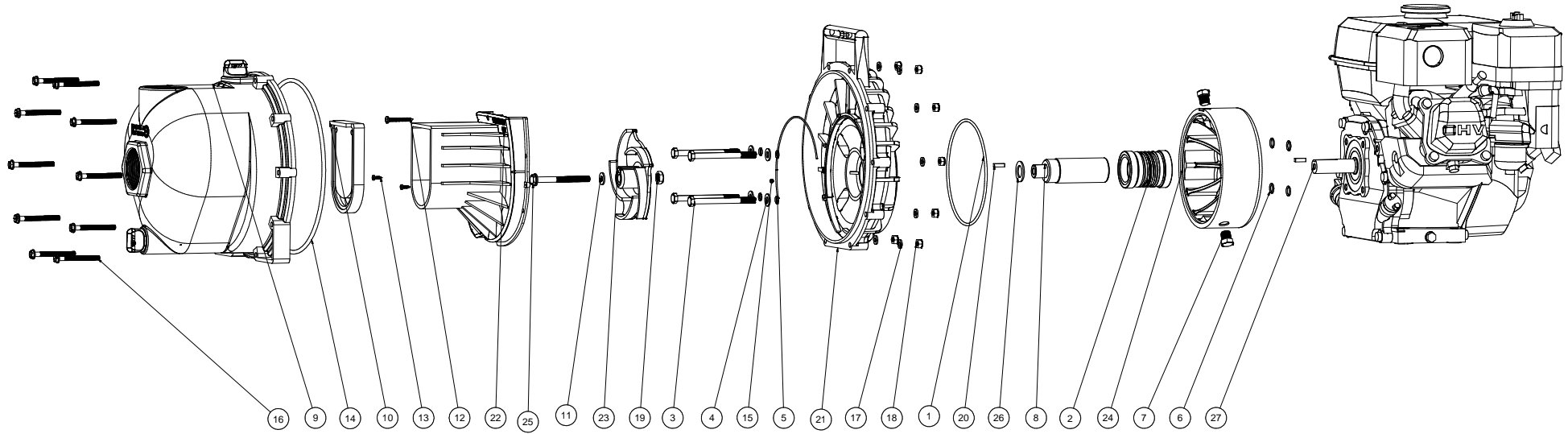


ITEM	QTY	PART NUMBER	DESCRIPTION
1	1	13719	#256 O-RING
2	1	15035	MECH. SEAL ASSY.
3	4	12034	5/16 - 24 X 3 3/4" HHCS
4	4	12901	5/16" FLAT WASHER
5	4	12717	O-RING FOR BRKT SCREW
6	4	12709	#13 O-RING
7	2	17032	1/4" DRAIN PLUG
8	1	12155	ADAPTER SHAFT
9	1	12712A	2" PUMP BODY ASSY
10	1	12705	CHECKVALVE
11	1	12774VA	IMPELLER BOLT GASKET
12	1	12900	#10 X 1 1/2" PPH SMS
13	2	12725	#6 X 1/2" PPH SMS
14	1	12719A	PUMP BODY O-RING #375
15	1	12754	O-RING SEGMENT
16	10	12720	1/4-20 X 2 1/2" SL IND HWHS
17	10	V07018	1/4" LOCKWASHER
18	10	V07019	1/4-20 HEX NUT
19	1	12775A	7/16-14 HEX NUT
20	2	12902A	3/16" SQ. X 5/8" KEY
21	1	12707W	2" W.S. REAR BRACKET
22	1	12702A	2" POLY PUMP VOLUTE
23	1	12772	IMPELLER
24	1	12202W	2" POLY RESERVOIR
25	1	12766	5/16-24 X 3 1/4" HFS
26	1	CV10175	GASKET
27	1	E5H	5 HP HONDA



BANJO CORPORATION
 150 BANJO DRIVE, CRAWFORDSVILLE, IN 47933
 WEB SITE: WWW.BANJOCORP.COM
 E-MAIL: SALES1@BANJOCORP.COM

THIS DRAWING AND ALL INFORMATION CONTAINED THEREON ARE THE EXCLUSIVE PROPERTY OF BANJO CORPORATION.

UNLESS SPECIFICALLY NOTED, THIS DRAWING AND ITEMS SHOWN ON THIS DRAWING ARE SUBJECT TO CHANGE AT ANY TIME.

DESCRIPTION
2" POLY WET SEAL PUMP
 PART NUMBER
200PH5W